

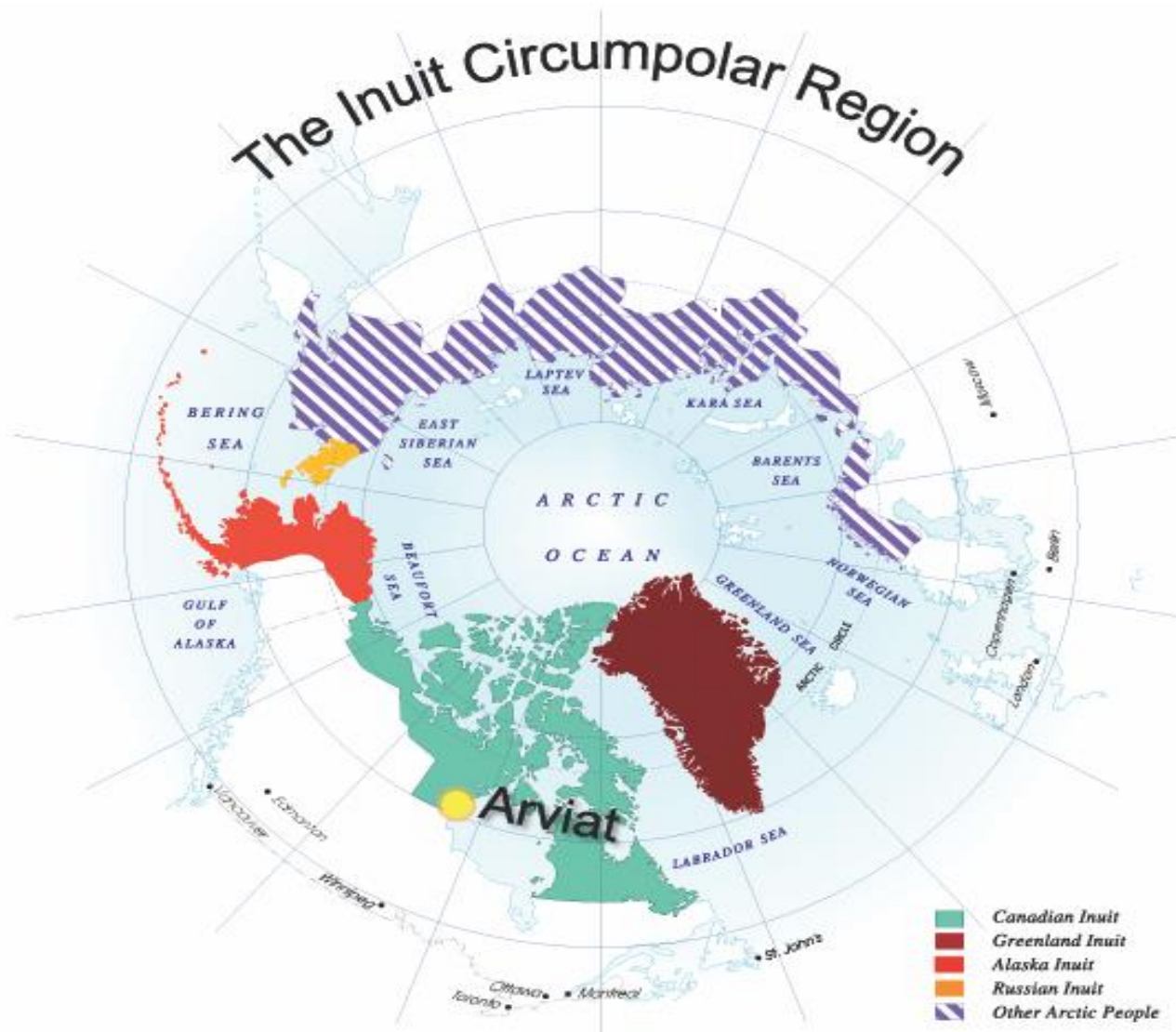


Lessons Learned from Community-Engaged Research and Capacity Enhancement: North-South Collaborations to support Low-Impact Arctic Shipping Corridors Decision-making

Arviat's Experience



Arviat Aqqiumavvik



Aqqiumavvik Society Facebook

www.aqqiumavvik.com

Community Recommendations from the Research

- New and improved charting
- Permanent lighted navigational buoys and GPS co-ordinates to mark reefs etc.
- S&R and spill responses should seek input from community experts
- Spill response plan, training & coordination
- Understand the impacts of coastal erosion
- Understand the impacts on ice

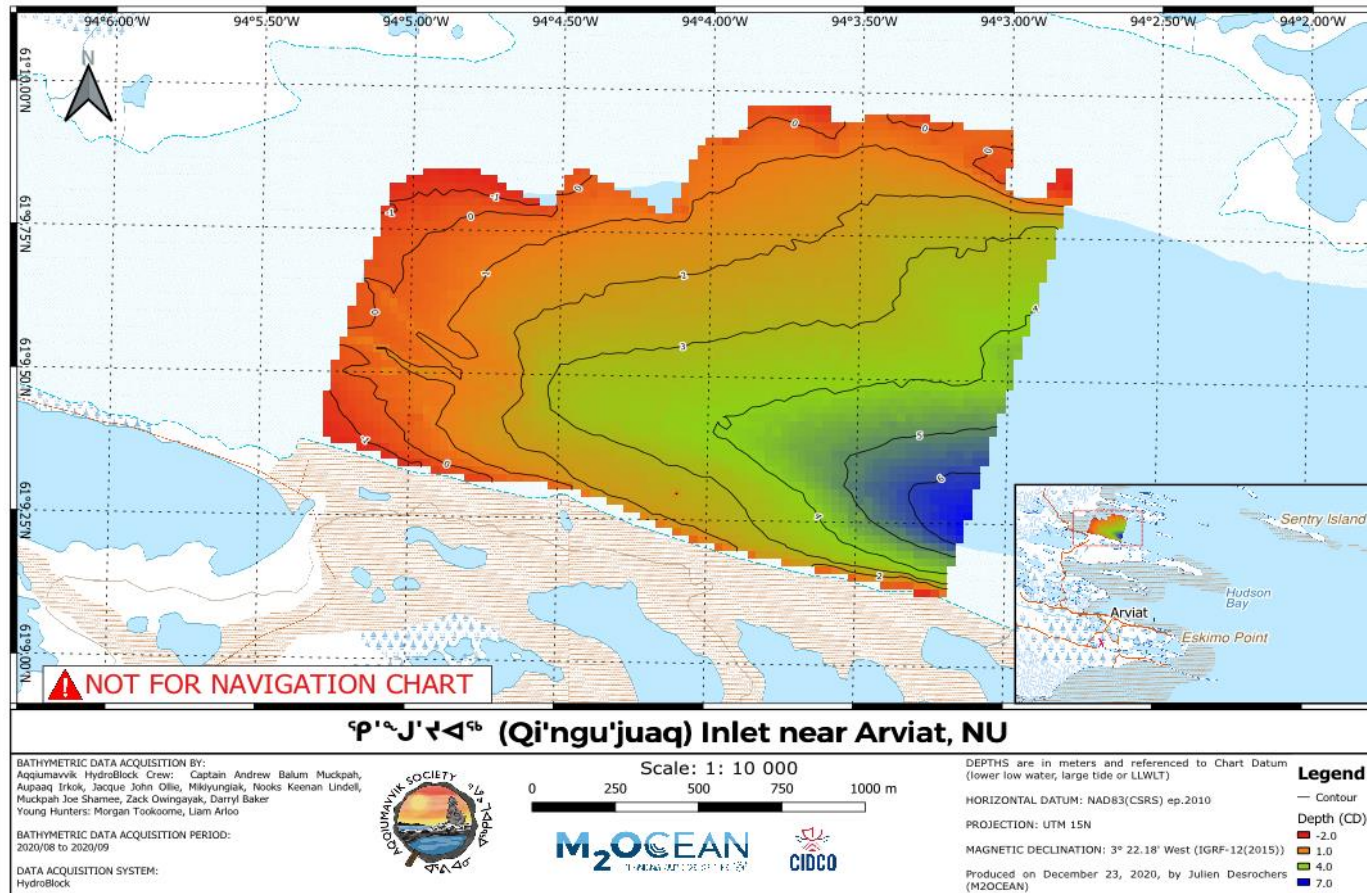


Understanding ice & shipping impacts

- Concerns about changes to ice conditions: safety & evidence of changes that can impact travel in ice
- SmartICE monitoring
- Training youth
- Sharing information



Charting our coastline with Hydrobox



- Charting technology
- Map making
- Sharing map evidence - quality
- Lobbying for safety measures – buoys & markers
- Safety initiatives

Collaborative Bathymetry in Arviat:

https://www.youtube.com/watch?v=fRtY5Ks5BPi&list=PLPRxuQd0b6b_zn7d5nelveppEjSXLaqyR&index=23

Proactive protections

- Search & Rescue recognition of local expertise
- Advocating for community preparedness
- Community engagement in proactive lobbying



Next steps

- Becoming very systematic & effective in monitoring efforts
- Training continually
- Communicating what we are learning to all levels
- Building a sense of urgency that can impact change

